

# Price list 2025

## Software solutions



# Infobric Group - your Nordic digitalisation partner for a sustainable construction industry.

**Infobric Group is a leading provider of software solutions that set new standards for a resource-efficient and sustainable construction industry.**

Our mission is to digitalize the construction industry—with a clear focus on making it more productive, safer, and more sustainable through innovative technology. We offer user-friendly solutions for complex problems that are ready to be integrated into our customers' digital ecosystems, while also fostering healthy competition between companies. Infobric is owned by Stirling Square Capital Partners, who invest in solutions to global sustainability challenges. We support our customers in optimally managing their workforce and operations, both on and off-site, through our two business areas: Workforce and Equipment & Assets.

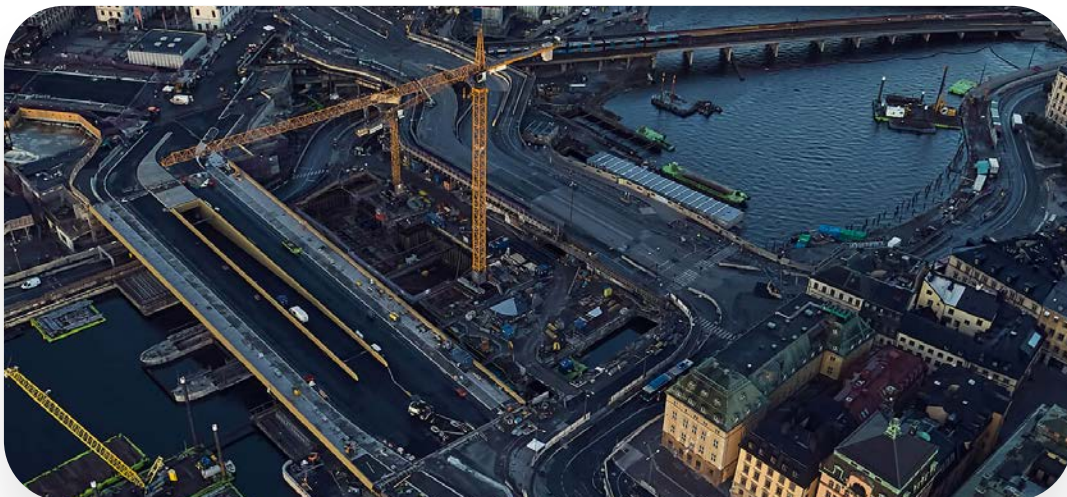
## Workforce



## Equipment & Assets

The Workforce segment specialises in solutions tailored for work performed on construction sites. Infobric Group offers a wide range of solutions for on-site workforce and contractor management using real-time data accessible on a range of digital devices.

The Equipment & Assets segment addresses capacity utilization needs outside the construction site. Our solutions increase productivity and resource efficiency by providing data-driven decision support for mobile workforce and companies with a large machine and vehicle fleet.



## Workforce offers smart features that help you keep track of companies, individuals, and QHSE.

Our services provide you with full control over which individuals and companies are present at your workplace and the ability to manage their permissions. Our QHSE-platform assists your company in standardizing and further developing processes.

Our service Pre-Registration enables proactive due diligence, ensuring that only qualified contractors are granted access to the worksite. With the Supplier Monitoring service, you gain full oversight of all subcontractors throughout the entire project duration.

### Basic

Basic is the package for the small construction site. It includes core features such as workforce management, attendance tracking, personnel register, digital competencies, assembly list, subcontractor chain, and a variety of reports.

### Standard

In addition to everything included in Basic, you also get access management and a variety of smart features in the Standard package. With the Message function, site management can send messages via the Ease Checkin app to everyone connected to the project. Geofence makes it possible to require physical presence within a defined area when checking in with the app. Focus skills give you an overview of which people have important skills that are needed on the construction site.

### Plus

The Plus package includes everything you need for full control over your construction site. It naturally includes all services from both the Basic and Standard packages, as well as Supplier Control, Pre-Registration, and Log Quality. Supplier Monitoring gives site management full control over subcontractors at all levels, while Pre-Registration ensures that companies are qualified and that the staff have the necessary competencies before they arrive at the site. Log Quality improves the personnel register and enhances safety on the construction site.

### Field

Infobric Field is a results-focused QHSE-platform with a unique emphasis on reducing response times and driving individual accountability. With great flexibility to customize processes and templates, you can adapt it to your workflows without sacrificing standardization.

Field is a separate module that can be used separately or combined with any of the packages



# Adapt according to your

Infobric Site - 3 smart packages. Basic, Standard or Plus - you choose.

<div style="background-color: #f0f0f0; padding: 10px; border-radius: 10px;"> <p style="font-size: 8px; font-weight: bold; background-color: #ccc; border-radius: 5px; padding: 2px 5px;">Infobric Site</p> <h2 style="text-align: center; margin: 10px 0;">Basic</h2> <p style="font-size: 8px; margin: 5px 0;">Basic functions for a small construction project for everyday life to work smoothly.</p> <p style="text-align: center; font-size: 18px; font-weight: bold; margin: 10px 0;">From 305 SEK</p> <p style="font-size: 8px; margin: 0 0 0 20px;">per month and project</p> <ul style="list-style-type: none"> <li>✓ Unlimited number of users</li> <li>✓ Free training and support</li> <li>✓ Personnel management</li> <li>✓ Attendance control with evacuation list</li> <li>✓ Staff ledger</li> <li>✓ Digital competence certificate</li> <li>✓ Subcontractor chain</li> <li>✓ Ease CheckIn App</li> <li>✓ Reports</li> </ul> </div>	<div style="background-color: #f0f0f0; padding: 10px; border-radius: 10px;"> <p style="font-size: 8px; font-weight: bold; background-color: #ccc; border-radius: 5px; padding: 2px 5px;">Infobric Site</p> <p style="text-align: right; font-size: 8px; font-weight: bold; background-color: #e67e22; color: white; border-radius: 5px; padding: 2px 5px; margin-bottom: 5px;">Popular choice!</p> <h2 style="text-align: center; margin: 10px 0;">Standard</h2> <p style="font-size: 8px; margin: 5px 0;">Smart tools for access management, communication och follow-up to enhance productivity and safety.</p> <p style="text-align: center; font-size: 18px; font-weight: bold; margin: 10px 0;">From 415 SEK</p> <p style="font-size: 8px; margin: 0 0 0 20px;">per month and project</p> <ul style="list-style-type: none"> <li>✓ Unlimited number of users</li> <li>✓ Free training and support</li> <li>✓ Personnel management</li> <li>✓ Attendance control with evacuation list</li> <li>✓ Staff ledger</li> <li>✓ Digital competence certificate</li> <li>✓ Subcontractor chain</li> <li>✓ Ease CheckIn App</li> <li>✓ Reports</li> <li>✓ Access management</li> <li>✓ Message function</li> <li>✓ Geofence</li> <li>✓ Focus competencies</li> </ul> </div>	<div style="background-color: #f0f0f0; padding: 10px; border-radius: 10px;"> <p style="font-size: 8px; font-weight: bold; background-color: #ccc; border-radius: 5px; padding: 2px 5px;">Infobric Site, Intelligence, Connect</p> <h2 style="text-align: center; margin: 10px 0;">Plus</h2> <p style="font-size: 8px; margin: 5px 0;">Complete package for full control of construction sites and subcontractors.</p> <p style="text-align: center; font-size: 18px; font-weight: bold; margin: 10px 0;">From 765 SEK</p> <p style="font-size: 8px; margin: 0 0 0 20px;">per month and project</p> <ul style="list-style-type: none"> <li>✓ Unlimited number of users</li> <li>✓ Free training and support</li> <li>✓ Personnel management</li> <li>✓ Attendance control with evacuation list</li> <li>✓ Staff ledger</li> <li>✓ Digital competence certificate</li> <li>✓ Subcontractor chain</li> <li>✓ Ease CheckIn App</li> <li>✓ Reports</li> <li>✓ Access management</li> <li>✓ Message function</li> <li>✓ Geofence</li> <li>✓ Focus competencies</li> <li>✓ Supplier Control</li> <li>✓ Pre-registration</li> <li>✓ Log quality</li> </ul> </div>
--	--	---



Infobric Field - Separate module that can be used separately or combined with any of the packages above.

<div style="background-color: #f0f0f0; padding: 10px; border-radius: 10px;"> <h2 style="text-align: center; margin: 10px 0;">Field</h2> <p style="font-size: 8px; margin: 5px 0;">User-friendly and result focused QHSE-platform for increased control at the workplace.</p> <p style="text-align: center; font-size: 18px; font-weight: bold; margin: 10px 0;">From 525</p> <p style="font-size: 8px; margin: 0 0 0 20px;">per month and project</p> </div>	<ul style="list-style-type: none"> <li>✓ Unlimited number of users</li> <li>✓ Workplace introduction</li> <li>✓ Observations</li> <li>✓ Incident and accident mana-</li> <li>✓ Remarks</li> <li>✓ Action management</li> <li>✓ Digital forms</li> <li>✓ Inspections</li> <li>✓ Automated documentation</li> <li>✓ Roles and notifications at company level</li> <li>✓ Company templates</li> <li>✓ Customised workflows*</li> <li>✓ Investigations*</li> <li>✓ Insights*</li> </ul>	<p style="font-size: 8px; margin: 10px 0;">* Features included for corporate customers with the aim of standardizing the use of Field at your workplaces.</p>
--	---	---

## Company function: Customer Success

**Support by a dedicated Customer Success Manager.**

We assist your company in standardizing and further developing the processes covered by our platforms—either independently using our corporate features or with the support of your dedicated Customer Success Manager. Your Customer Success Manager ensures that you make the most of Workforce.

2 500 per month

# Monthly cost based on the order value of your

All prices in the table are list prices in SEK per month.




Project value MSEK	Infobric Site			Infobric Field
	Basic	Standard	Plus	Field
0 - 2	305 kr/	415 sek/mon	765 sek/	525 sek/
2 - 10	615 sek/mon	845 sek/	1 520 sek/	840 sek/
10 - 25	915 sek/mon	1 260 sek/	2 290 sek/	1 470 sek/
25 - 50	1 230 sek/mon	1 680 sek/	3 045 sek/	2 100 sek/
50 - 100	1 510 sek/	2 100 sek/	3 830 sek/	2 950 sek/
100 - 200	1 830 sek/mon	2 520 sek/	4 580 sek/	4 200 sek/
200 - 500	2 130 sek/mon	2 940 sek/	5 420 sek/	5 570 kr/mån
500 - 1000	2 420 sek/mon	3 360 sek/	6 260 sek/	7 980 sek/
1000 -	2 730 sek/	3 940 sek/	7 770 sek/	10 390 sek/

Read more on page 8.


# Infobric Site value-added services.

To further enhance safety and efficiency on the construction site, Infobric offers a complete range of products and services, such as access control systems with gates and door locks. All products are integrated into the Infobric Site web service, where you can easily manage the devices and have full overview of what is happening on the construction site. A connection fee per device and per day\* applies for each product


## Gate control

Product	Description	Connection fee / 24 hrs
Vehicle gate 	The vehicle gate is a good tool to increase safety and create efficient logistics. Control incoming and outgoing deliveries to the construction site. Permissions and schedules are easily set in Infobric Site.	57 sek
Pedestrian gate 	With the pedestrian gate, it is easy to increase safety and control the flow of people on the construction site. It also gives you an electronic personnel log of who is active in the workplace.	57 sek
Controlbox 	With the Controlbox, you can gates or locks with electronic governance and easily manage access in Infobric Site.	57 sek

## Door control

Product	Description	Connection fee / 24 hrs
Door system 	Electronic door lock to increase security through access control entry to e.g., sheds and containers.	16 sek



## Machine control

Product	Description	Connection fee / 24 hrs
Machine control 	With Infobric Machine Control, you can manage permissions and monitor the use of lifts and other machines on the construction site. The system can also be used for smart and efficient management of the fleet (Fleet Management).	16 sek

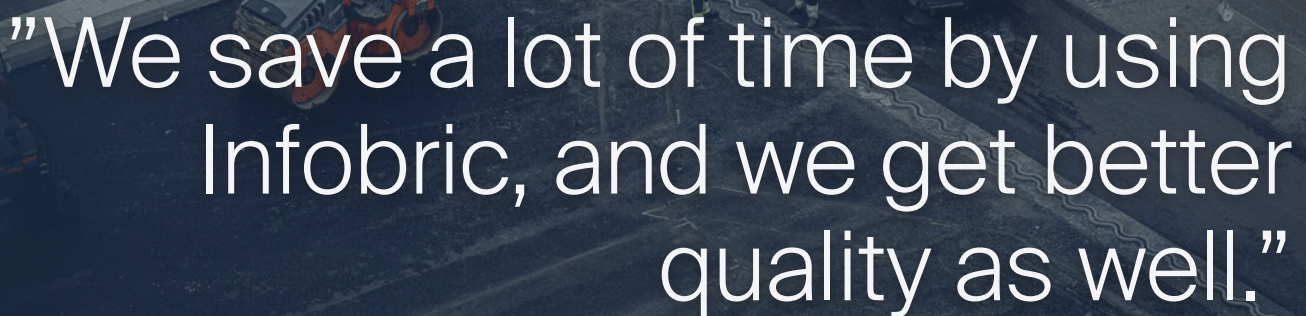
\*The connection fee is charged for the period during which a device is connected to Infobric Site. A device is considered connected when there is data communication between the device and Infobric Site. The period begins on the day the device is connected to the construction site in Infobric Site and continues until, but not including, the first continuous period of at least seven days when the device is no longer connected to the construction site in Infobric Site.

# Infobric Site value-added services contd.

## Smart Lock

Product	Description	Connection fee / 24 hrs
Mobile door lock 	Mobile and wireless door lock. The lock is opened with the Ease CheckIn app and an access schedule is set in Infobric Site. Full overview in the app of all locks that you have access to at each workplace and at what times access is granted. Configuration of the lock is done in the app.	5 sek**
Mobile door lock Entrance unit 	Keyless lock management for entrance system. The lock is opened with the Ease CheckIn app and an access schedule is set in Infobric Site. Full overview in the app of all locks that you have access to at each workplace and at what times access is granted. Configuration of the lock is done in the app.	5 sek**

\*\*The connection fee is charged for the period during which a device is registered to a project in Infobric Site. The period begins on the day the device is added to the construction site in Infobric Site. A device is considered registered when it has been added under the site's devices in the web service. The period continues until, but not including, the first continuous period of at least seven days when the device is no longer registered to the construction site in Infobric Site.



“We save a lot of time by using Infobric, and we get better quality as well.”

## Information about our packages.

### Site - Basic, Standard & Plus

The monthly fee for Infobric Site is based on the construction value of the project where the service is used, regardless of the number of system users, connected app accounts, or registered suppliers. For Infobric Site, there is no notice period. Projects can be terminated at any time at the Customer's discretion without prior notice.

### Start-Up Fee

If Infobric is used as a System Administrator, a start-up fee of SEK 995 SEK per project applies.

### Infobric Site Basic

A fee is charged for each commenced month when a unit is registered to a project (worksite) in Infobric Site and, when applicable, the Ease CheckIn mobile app is connected.

A unit is considered registered when added under the worksite's units in the web service. The Ease CheckIn mobile app is considered connected when used to check in or out.

The billing period continues up and until the end of the month in which the unit is removed from Infobric Site and, when applicable, the Ease CheckIn app is no longer connected. No charge applies if neither the unit nor the app was active for only one day in the billing month.

### Infobric Site Standard and Infobric Site Plus

A fee is charged for the entire period during which the Infobric Site Standard or Infobric Site Plus agreement level is active..

### Change of agreement level

During an ongoing project, the subscription level for Infobric Site can be changed as follows. Downgrade from Standard to Basic will be effective 30 days after the Customer's written request. Downgrade from Plus to Standard or Basic will be effective 90 days after the Customer's written request.

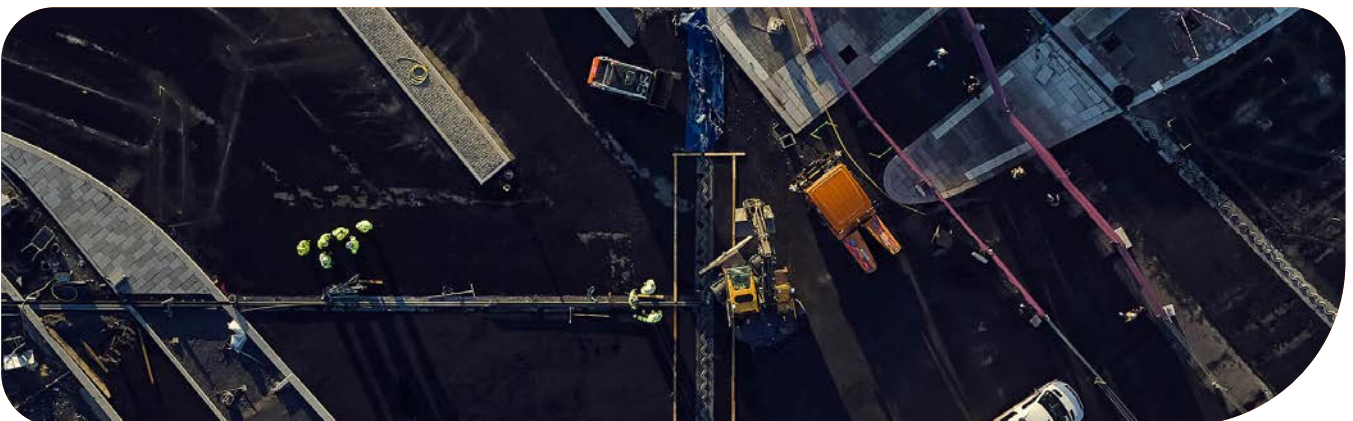
### Field

A fee is charged for each started month, beginning in the month the project starts and continuing until the end of the month in which the project is archived. If a project is archived and later reactivated by the customer, a fee will be charged for each started month from the month of reactivation until the end of the month the project is archived again.

User support for all users is included in the monthly fee.

### Onboarding Fee

When starting a new project, an onboarding fee equivalent to one month's fee applies. The onboarding process is a structured setup where we work with you to plan the project, customize settings, arrange project-specific online training, and ensure a smooth startup as planned.





**Do you want to order our  
software solutions?**

**Contact us at  
+46(0)36-34 03 02**

**Or find more information on our  
website.**



Read and order your solution via the web or contact us and we'll help you get started. Read more at [infobric.se/workforce/en](https://infobric.se/workforce/en)

Infobric AB  
Framgången 1, 553 18 Jönköping,  
Sweden  
Phone: +46 36 34 03 02  
[info@infobric.se](mailto:info@infobric.se)

